

## Monthly Weather Summary in Thailand

January 2016

The weather during this month was dominated by the occasion of high pressure area from China extended its ridge to cover upper Thailand, the prevailing of the northeast monsoon over the Gulf of Thailand and southern part accompanied with the strong westerly wind at high altitude dominate the northern and northeastern parts for few days. These caused cool weather in the northern and northeastern parts almost the whole month with cold weather in the upper portion of the northern part especially during late month that high pressure areas was active and the northeast monsoon was strengthened at that time. For this reason, temperature was sharply decreased nationwide with very cold weather in upper northern part during January 25-27. Under the influence of the southeasterly wind over upper Thailand and the passage of the westerly trough over the northern and northeastern parts for few days, upper Thailand obtained intermittent rainfall while southern Thailand obtained abundant rainfall mainly along the east coast during the middle and the end of the month and the strong wind wave occurred in several places during late month. Mean temperatures of January were above normal in almost parts except for slightly below normal in the northern part. Monthly total rainfall over Thailand was 34.1 mm (201%) above normal and monthly rainfall was higher than normal in all parts i.e. northern part 35.3 mm (767%), northeastern part 30.0 mm (625%), central 31.0 mm (463%), eastern part 44.3 mm (275%), southern part (east coast) 36.4 mm (61%) and southern part (west coast) 24.9 mm (94%).

**1-10 January :** High pressure areas from China extended its ridge to cover upper Thailand throughout the period and the another moderate high pressure areas extended to covered the mentioned areas during the second half of the period and later weakened. In addition, the northeast monsoon prevailed over the southern part and the Gulf of Thailand almost the whole period and the southeasterly wind blowing over the lower northeastern, lower central and eastern parts during late period. These conditions caused cool weather in upper Thailand and cold weather mainly in upper northern part and in some areas of the northeastern and central parts. The minimum temperature of the period was 8.7 °C, at Umphang in Tak province on January 6. In the mountainous areas and mountain tops, temperature climbed down to 2.0 °C at Doi Inthanon in Chiang Mai province on January 9. Frost occurred at Doi Ang Khang and Doi Inthanon in Chiang Mai province on January 7. For rainfall, upper Thailand experienced unseasonable rainfall in the northeastern, eastern, Bangkok and vicinity during late period. The maximum daily rainfall in upper Thailand was 52.5 mm at Laem Sing in Chanthaburi province on January 7. Southern part obtained isolated light rain nearly the whole period with the heaviest daily rainfall of 34.0 mm at Su-ngai Kolok in Narathiwat province on January 1.

**11-20 January :** The weather remained cool in Thailand with cold weather in upper northern part and in some areas of the northeastern part. The minimum temperature of the period was 8.0°C at Umphang in Tak province on January 12 and dropped to 1.5°C in the area of mountain top at Royal Agricultural Station Angkhang, Fang in Chiang Mai province on January 18 with the reported of frost at Doi Inthanon, Chom Thong in Chiang Mai province on January 11 and at Royal Agricultural Station Angkhang, Fang in Chiang Mai province on January 12. Affected by the southeasterly wind over the northern, lower northeastern, central, eastern and southern parts, it brought unseasonal rain into the northeastern, central and eastern parts mainly during early and late period. The highest daily rainfall was 117.2 mm at Thetsaban 1 School in Samut Prakan province on January 19. Southern Thailand obtained scattered to fairly widespread rain with heavy to very heavy rainfall in some places mainly during the middle of the period. The heaviest daily rainfall of 132.0 mm was measured at Amphoe Mueang in Songkhla province on January 15.

**21-31 January :** Under the ridge of active high pressure areas extending to dominate over Thailand from the middle of the period and later weakened accompanied with the active northeast monsoon as well as the westerly trough moving through the northern and the northeastern parts during mid-period. Temperature was decreasing particularly on January 25 that dropped 4-10°C from the previous day and further reduced in subsequence day which induced cool and cold weather nationwide especially in the upper northern part that experienced very cold weather during mid-period after that temperature relatively increased. Cool weather was also presents in many areas of southern part and some areas of upper portion experienced cold weather. The lowest temperature 7.5°C was measured at Thung Chang in Nan province on January 26 and dropped to -1.0°C at Phluang Wild Life Sanctuary and Phu Ruea National Park in Loei province on January 25. Besides, with the passage of the westerly trough over the northern and northeastern parts during mid-period, unseasonal rainfall occurred in upper Thailand. The maximum daily rainfall was 100.5 mm at Phluang Wild Life Sanctuary in Loei province on January 21 with gusty wind occurred at Loei, Mahasarakham and Yasothon provinces on January 23 and at Chiang Mai and Mukdahan provinces on January 24 and at Chaiyaphum, Trat and Phatthalung provinces on January 25. Southern Thailand received scattered to fairly widespread rain with heavy to very heavy rainfall in some areas mainly during mid-period along the east coast. The heaviest daily rainfall was 301.5 mm at Ra-ngae in Narathiwat province on January 27. Gusty wind occurred at Phatthalung province on January 25. Strong wind wave occurred at Prachuap Khiri Khan, Chumphon, Surat Thani, Songkhla, and Narathiwat provinces on January 25 and at Pattani province on January 26 as well as flash flooding at Narathiwat province on January 28.

---

**Note :** Rainfall, temperatures and natural disasters in this report were updated up to February 2, 2016.

Climatological Center  
Meteorological Development Bureau  
Meteorological Department

Monthly Current Report  
Rainfall and Accumulative Rainfall  
January 2016

Northern Thailand

Station	Temperature ( °c)		Rainfall (mm)		Accumulative rainfall (mm) Since 1 January	
	Mean	Above or below normal	Actual	Above or below normal	Actual	Above or below normal
Chiang Rai	19.0	-0.7	30.0	22.5	30.0	22.5
Mae Hong Son	19.9	-0.7	17.7	11.3	17.7	11.3
Phayao	19.5	-1.1	48.9	43.2	48.9	43.2
Chiang Mai	21.6	0.1	34.2	30.0	34.2	30.0
Tha Wang Pha	19.6	-1.0	46.1	39.1	46.1	39.1
Nan	20.8	-0.6	68.5	64.1	68.5	64.1
Lamphun	21.2	-0.5	44.8	42.0	44.8	42.0
Lampang	21.4	-0.8	99.0	96.2	99.0	96.2
Mae Sariang	19.7	-0.7	27.4	25.9	27.4	25.9
Phrae	21.8	-0.5	33.3	27.5	33.3	27.5
Uttaradit	23.9	-0.2	27.3	21.8	27.3	21.8
Bhumibol Dam	24.0	0.3	41.7	39.1	41.7	39.1
Tak	24.1	0.0	38.9	36.8	38.9	36.8
Mae Sot	22.5	0.1	53.6	51.9	53.6	51.9
Umphang	20.3	0.1	29.8	23.0	29.8	23.0
Phitsanulok	24.6	-0.2	43.1	39.2	43.1	39.2
Lom Sak	24.5	0.2	47.5	42.7	47.5	42.7
Phetchabun	24.6	0.5	42.2	36.6	42.2	36.6
Wichian Buri	25.6	0.3	0.1	-7.6	0.1	-7.6
Kamphaeng Phet	24.7	-0.1	22.9	20.6	22.9	20.6
Over the area	22.2	-0.2	39.9	35.3 767%	39.9	35.3 767%

Northeastern Thailand

Station	Temperature ( °c)		Rainfall (mm)		Accumulative rainfall (mm) Since 1 January	
	Mean	Above or below normal	Actual	Above or below normal	Actual	Above or below normal
Nong Khai	23.4	0.9	81.8	73.5	81.8	73.5
Loei	22.4	0.7	34.5	28.3	34.5	28.3
Udon Thani	23.6	0.8	30.1	23.8	30.1	23.8
Nakhon Phanom	23.6	1.4	29.7	26.7	29.7	26.7
Sakon Nakhon	23.4	1.3	14.6	9.9	14.6	9.9
Mukdahan	24.4	1.8	13.8	10.1	13.8	10.1
Khon Kaen	24.5	1.1	27.9	23.9	27.9	23.9
Kosum Phisai	25.0	1.3	40.8	37.3	40.8	37.3
Roi Et	25.3	2.0	22.9	19.3	22.9	19.3
Chaiyaphum	25.6	1.4	105.7	101.2	105.7	101.2
Ubon Ratchathani	26.3	2.1	25.5	23.5	25.5	23.5
Tha Tum	25.5	1.5	27.2	22.1	27.2	22.1
Surin	26.2	2.1	16.0	10.4	16.0	10.4
Nakhon Ratchasima	25.7	1.4	38.0	29.8	38.0	29.8
Chok Chai	25.6	1.2	33.7	29.7	33.7	29.7
Nang Rong	25.6	1.3	15.2	10.5	15.2	10.5
Over the area	24.8	1.4	34.8	30.0 625%	34.8	30.0 625%

- NOTES :
- 1) Mean temperature is the average of daily dry-bulb temperature
  - 2) "T" is trace, rainfall amount less than 0.1 mm.
  - 3) "blank" is incomplete data.
  - 4) Temperature and rainfall are preliminary data.

Monthly Current Report  
Rainfall and Accumulative Rainfall  
January 2016

Central Thailand

Station	Temperature ( °c)		Rainfall (mm)		Accumulative rainfall (mm) Since 1 January	
	Mean	Above or below normal	Actual	Above or below normal	Actual	Above or below normal
Nakhon Sawan	25.8	0.3	6.8	2.5	6.8	2.5
Bua Chum	25.5	0.5	6.0	-0.7	6.0	-0.7
Lop Buri	26.5	0.1	54.8	49.1	54.8	49.1
Suphan Buri	26.6	0.9	48.7	45.0	48.7	45.0
Thong Pha Phum	25.2	0.4	3.8	-1.6	3.8	-1.6
Kanchanaburi	27.2	1.2	55.8	52.5	55.8	52.5
Bangkok Airport	27.3	0.3	53.0	41.6	53.0	41.6
Bangkok Metropolis	27.7	0.7	72.6	59.3	72.6	59.3
Over the area	26.5	0.6	37.7	31.0 463%	37.7	31.0 463%

Eastern Thailand

Station	Temperature ( °c)		Rainfall (mm)		Accumulative rainfall (mm) Since 1 January	
	Mean	Above or below normal	Actual	Above or below normal	Actual	Above or below normal
Prachin Buri	27.4	0.6	24.6	16.9	24.6	16.9
Kabin Buri	26.3	0.0	19.0	10.0	19.0	10.0
Aranyaprathet	27.7	1.6	4.9	-0.5	4.9	-0.5
Chon Buri	27.6	0.7	102.9	93.0	102.9	93.0
Ko Sichang	27.2	0.7	51.0	40.1	51.0	40.1
Pattaya	27.0	0.7	39.7	24.1	39.7	24.1
Sattahip	26.4	0.2	69.1	43.5	69.1	43.5
Rayong	27.2	1.0	108.4	87.7	108.4	87.7
Chanthaburi	27.4	1.0	37.9	19.2	37.9	19.2
Khlong Yai	27.8	1.3	146.8	109.6	146.8	109.6
Over the area	27.2	0.8	60.4	44.3 275%	60.4	44.3 275%

- NOTES :
- 1) Mean temperature is the average of daily dry-bulb temperature
  - 2) "T" is trace, rainfall amount less than 0.1 mm.
  - 3) "blank" is incomplete data.
  - 4) Temperature and rainfall are preliminary data.

Monthly Current Report  
Rainfall and Accumulative Rainfall  
January 2016

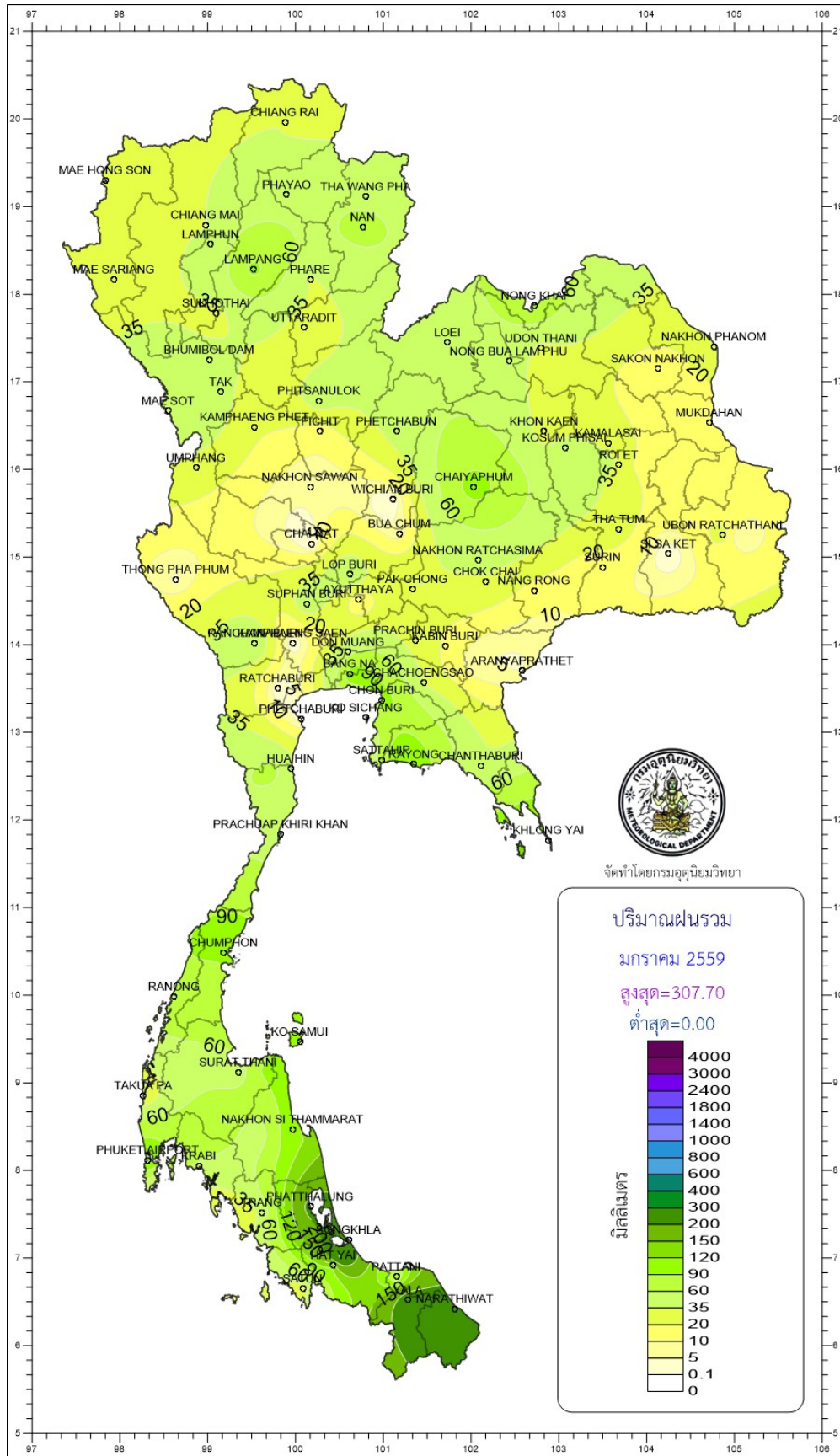
Southern Thailand, east coast

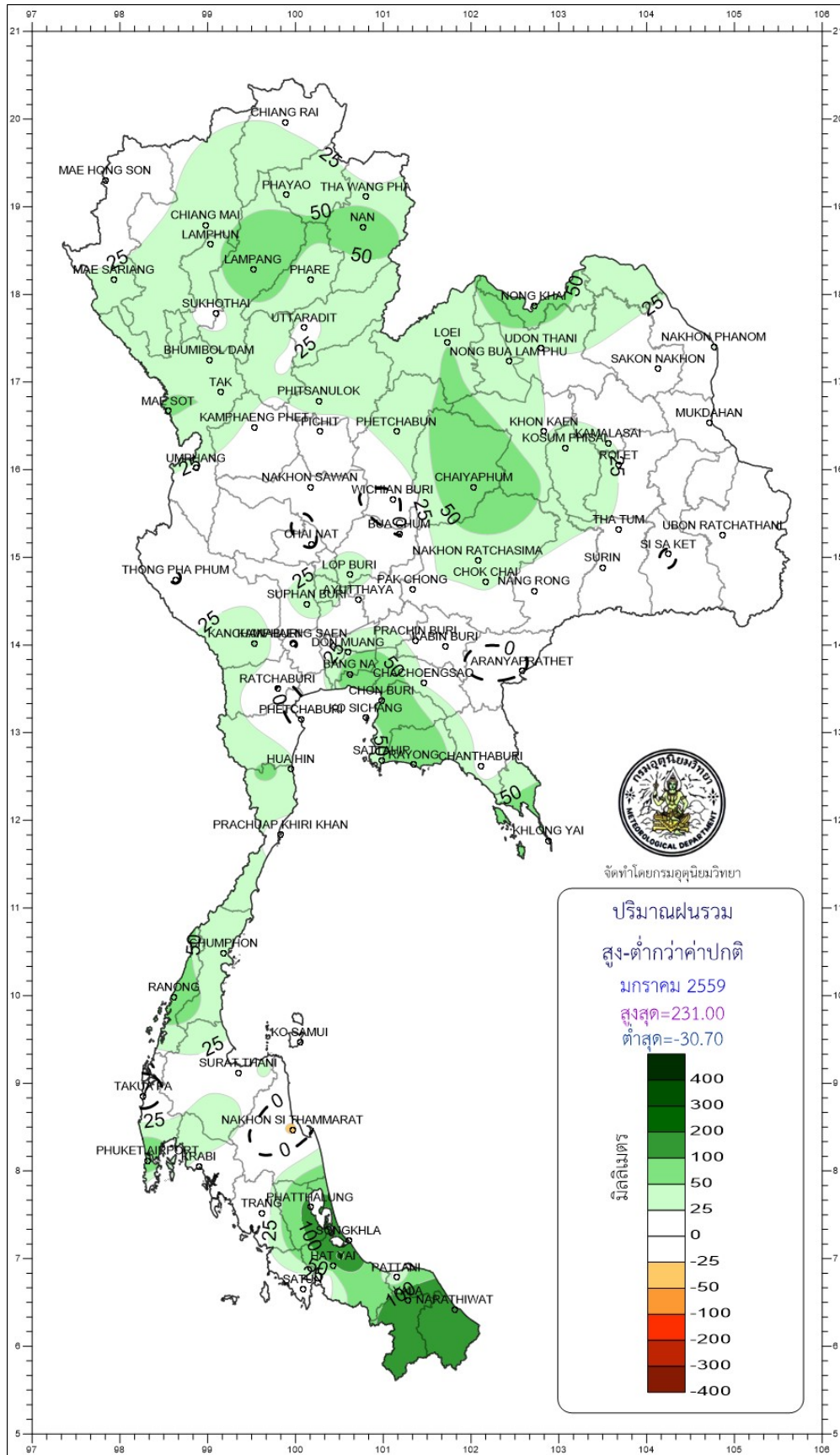
Station	Temperature ( °c)		Rainfall (mm)		Accumulative rainfall (mm) Since 1 January	
	Mean	Above or below normal	Actual	Above or below normal	Actual	Above or below normal
Phetchaburi	27.0	1.2	2.4	-9.0	2.4	-9.0
Hua Hin	27.1	1.1	41.5	29.7	41.5	29.7
Prachuap Khiri Khan	26.9	1.5	40.0	15.6	40.0	15.6
Chumphon	27.0	1.3	108.0	48.6	108.0	48.6
Surat Thani	27.0	1.4	44.7	7.9	44.7	7.9
Ko Samui	28.3	1.5	97.4	11.2	97.4	11.2
Nakhon Si Thammarat	27.1	1.1	114.7	-30.7	114.7	-30.7
Songkhla	28.4	1.3	192.5	117.7	192.5	117.7
Hat Yai Airport	27.3	1.3	129.0	75.2	129.0	75.2
Pattani Airport	27.7	1.7	63.0	12.1	63.0	12.1
Narathiwat	27.7	1.6	224.1	122.5	224.1	122.5
Over the area	27.4	1.4	96.1	36.4 61%	96.1	36.4 61%

Southern Thailand, west coast

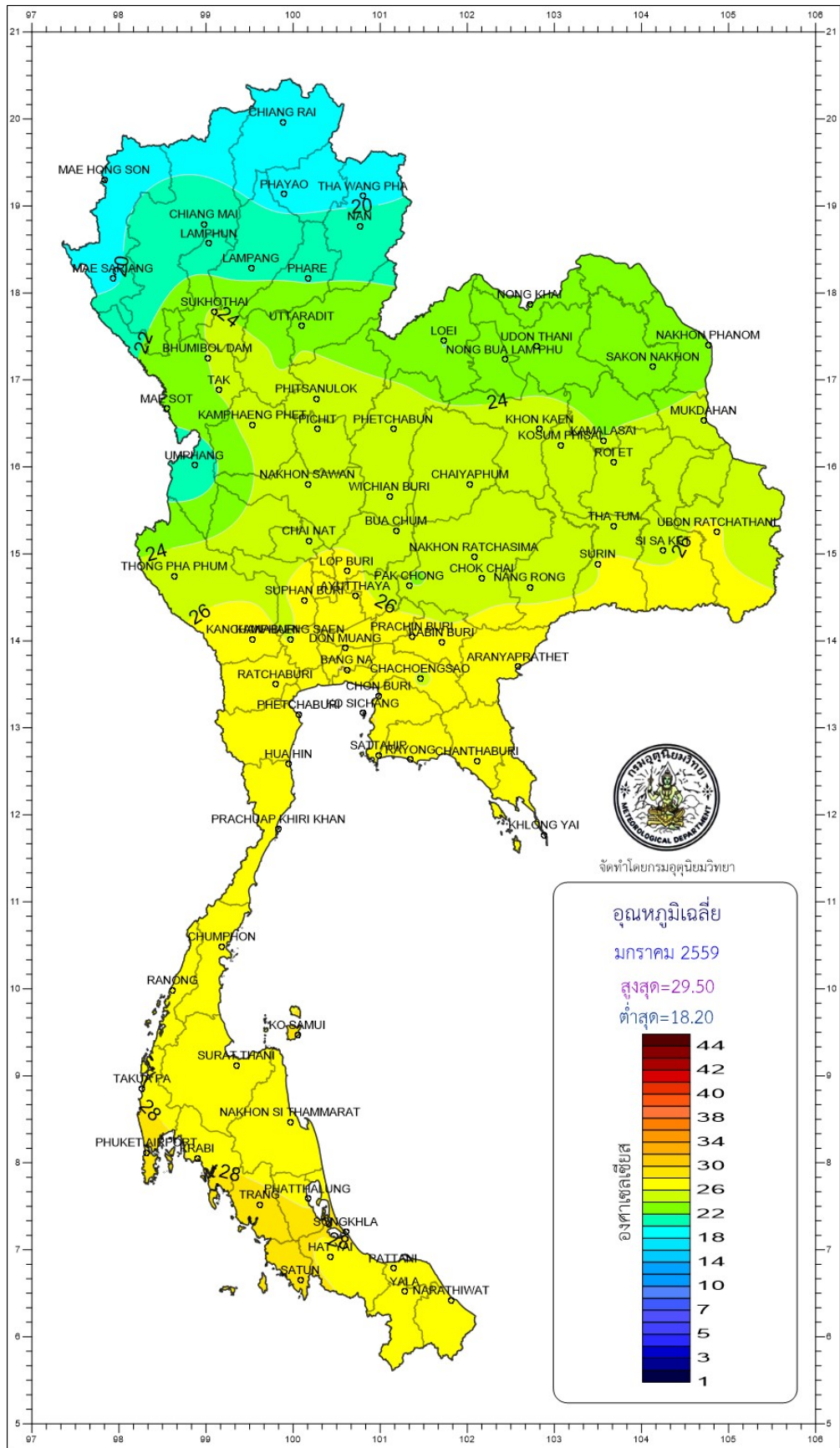
Station	Temperature ( °c)		Rainfall (mm)		Accumulative rainfall (mm) Since 1 January	
	Mean	Above or below normal	Actual	Above or below normal	Actual	Above or below normal
Ranong	27.7	1.0	90.7	80.7	90.7	80.7
Takua Pa	27.9	1.5	17.7	-21.7	17.7	-21.7
Phuket	29.5	1.4	41.6	11.3	41.6	11.3
Phuket Airport	28.7	1.7	127.1	90.9	127.1	90.9
Ko Lanta	29.0	1.4	17.8	2.9	17.8	2.9
Trang Airport	28.3	1.5	38.9	6.4	38.9	6.4
Satun	29.1	1.6	25.1	3.9	25.1	3.9
Over the area	28.6	1.4	51.3	24.9 94%	51.3	24.9 94%

- NOTES :
- 1) Mean temperature is the average of daily dry-bulb temperature
  - 2) "T" is trace, rainfall amount less than 0.1 mm.
  - 3) "blank" is incomplete data.
  - 4) Temperature and rainfall are preliminary data.



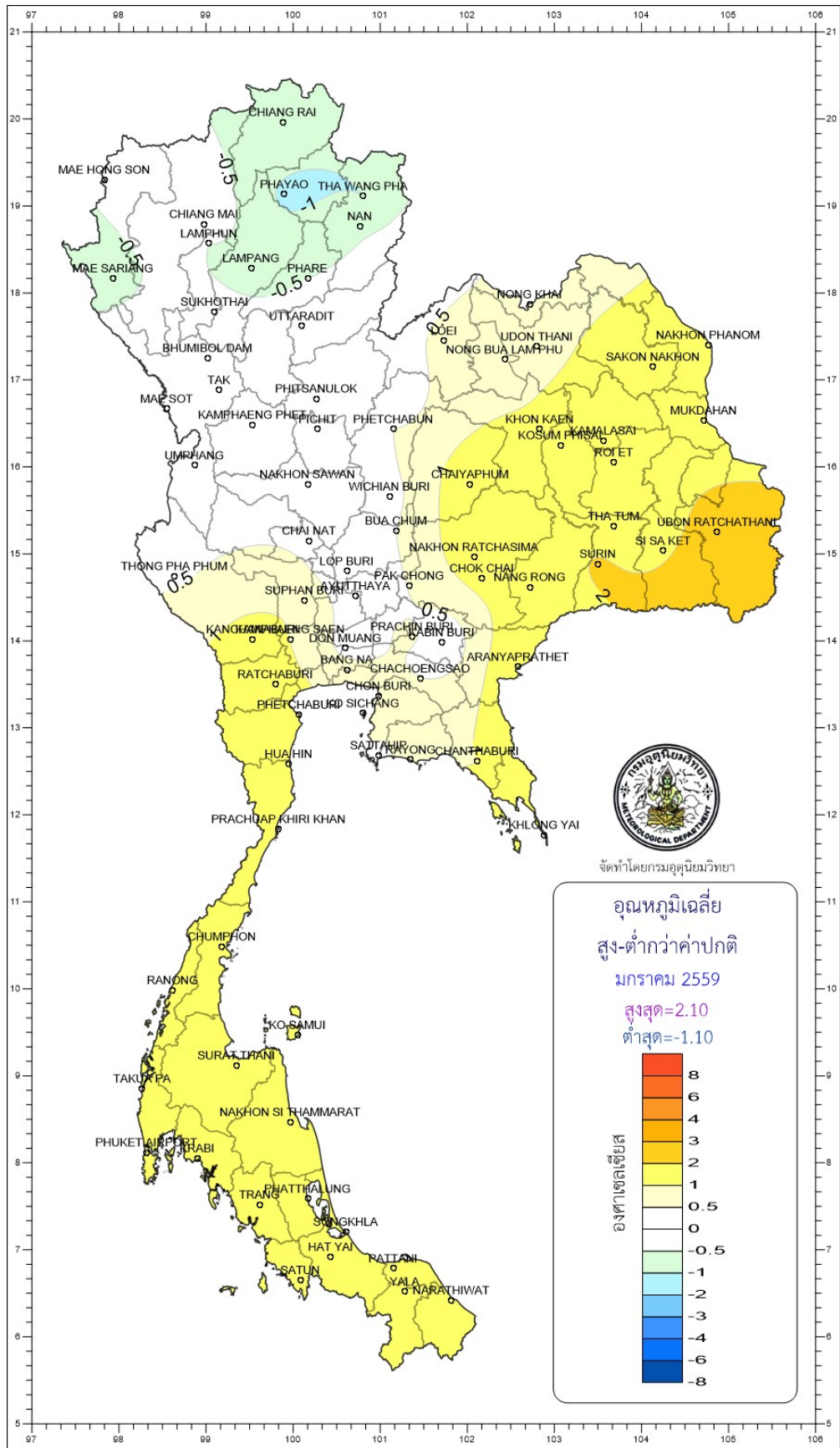






จัดทำโดยกรมอุตุนิยมวิทยา





จัดทำโดยกรมอุตุนิยมวิทยา

